

How to connect your Shifter with the SRAM Wireless Blips



1. Prepare the SRAM Blip:

Grab a heat gun and warm up the Blip. The hot air softens the adhesive.



2. Open the SRAM Blip:

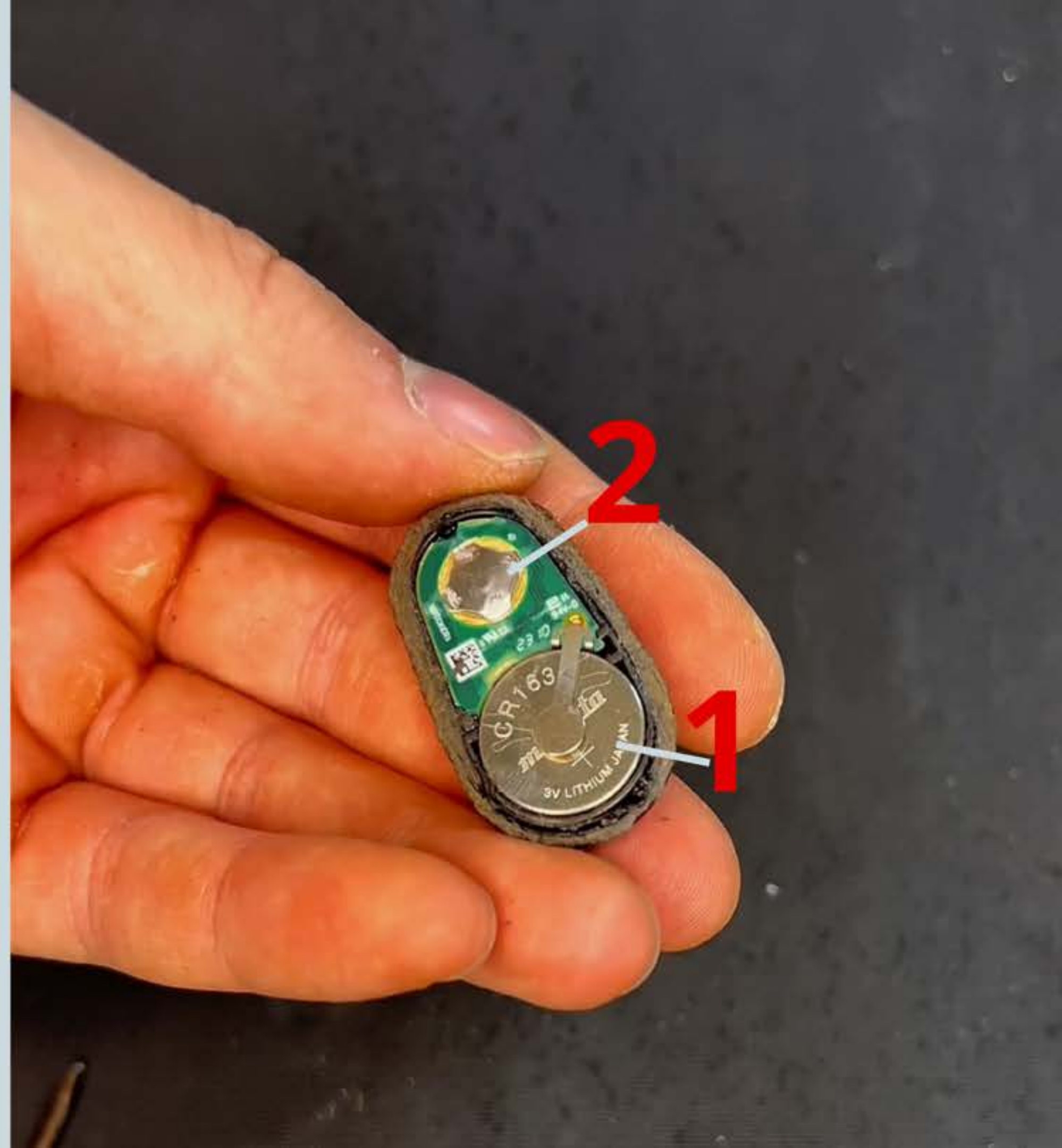
Take a pointed tool and carefully pierce the adhesive seam, doing this from all sides to pry the Blip open.

If needed, use a small saw along the adhesive seam while keeping the adhesive warm.



3. Open SRAM Blip:

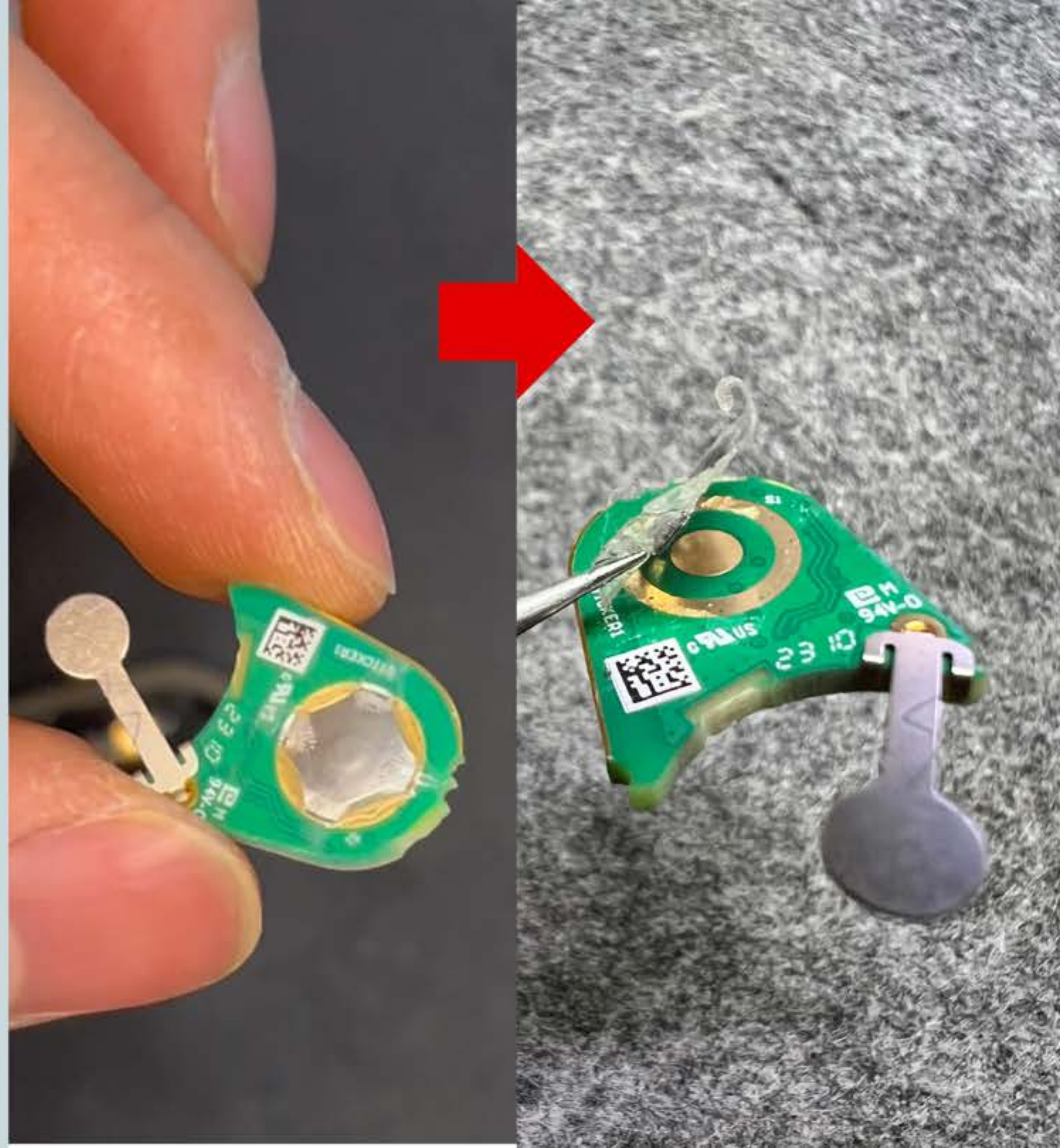
1. Battery
2. Button Sticker



4. Take-off the sticker:

Take out the circuit board.

Using tweezers, carefully remove the sticker from the circuit board. The golden areas are the contact surfaces for the switch.



5. Prepare the cables:

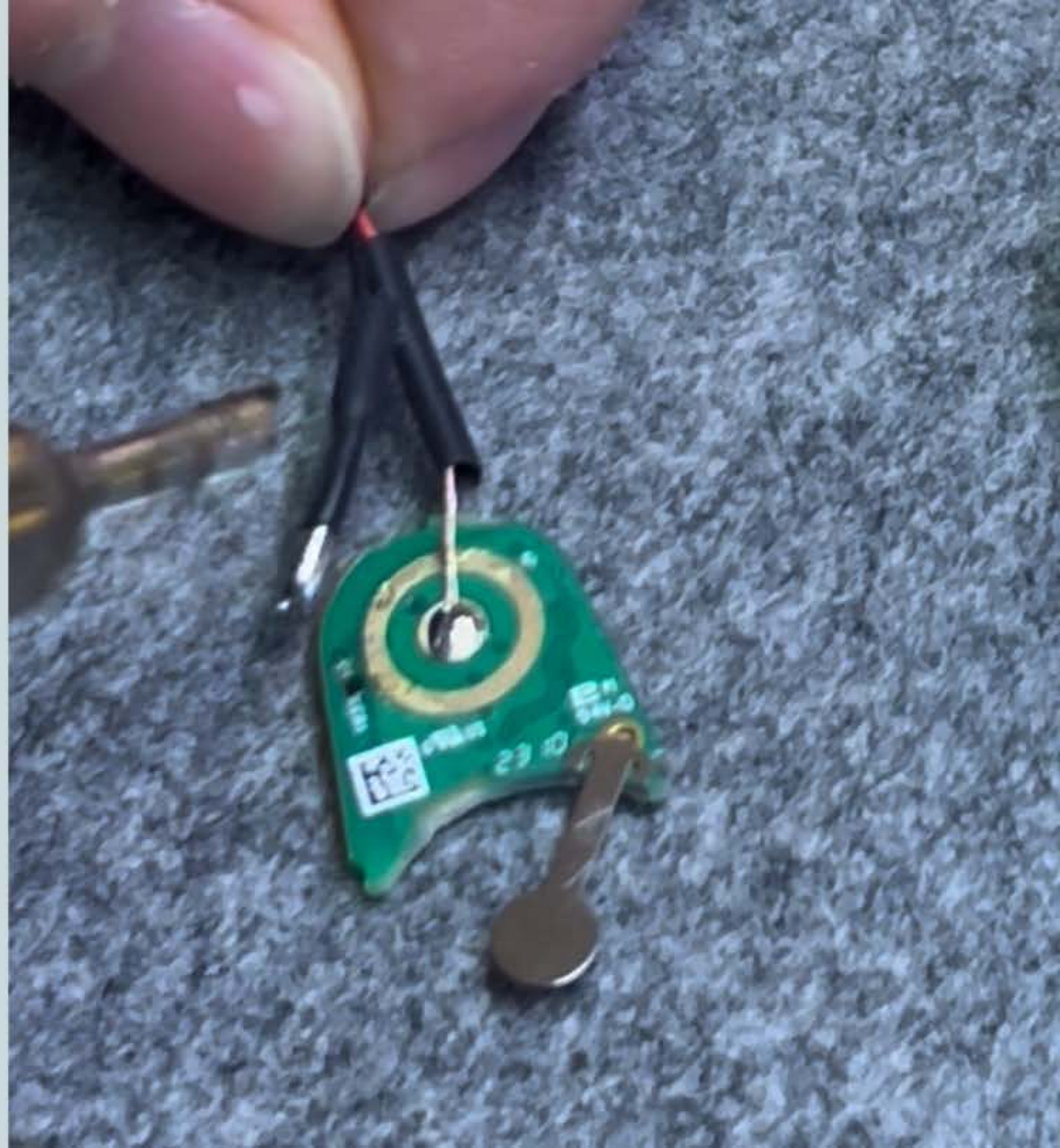
Measure the required cable length and trim it.

Strip the insulation to expose the copper wires and tin them



6. Solder the cables:

Solder the wire ends onto the contact points on the Blip's circuit board. Ensure no solder joints touch each other.



7. Repeat all steps

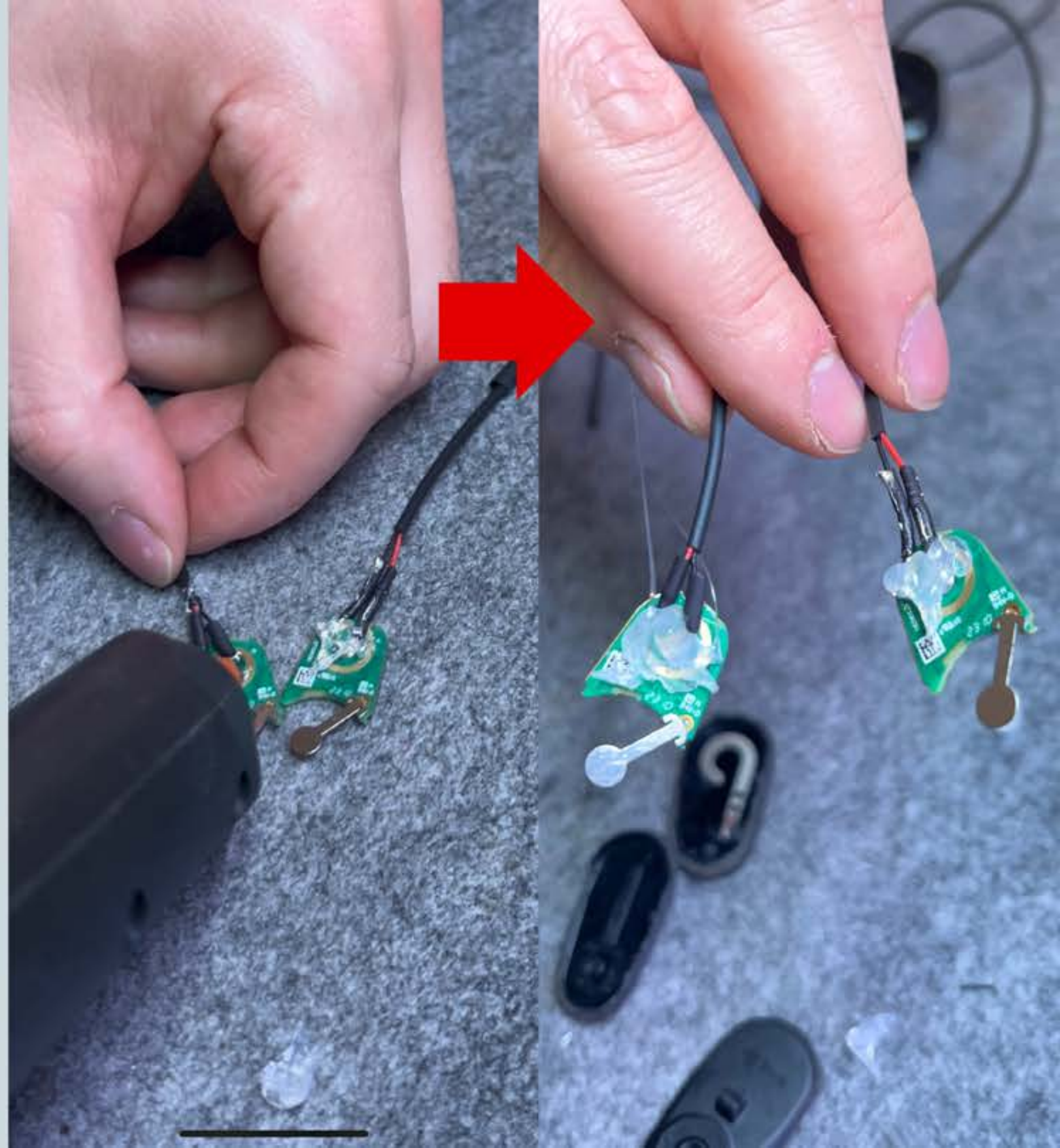
Repeat all steps for the second Blip.

One Blip will send the upshift signal and the other the downshift signal.



8. Insulate

Shrink the heat shrink tubing and seal the solder joints with hot glue.



9. Final steps

Before fitting the Blip into the handlebar, sand the casing to make it narrower.

Now, place the circuit board back into the modified casing, along with the original battery, and seal it all with heat shrink tubing.



10. Finished!

And there you have it, your custom Zirbel x Blips Shifter!

@cannondalepat
@zirbelbike

