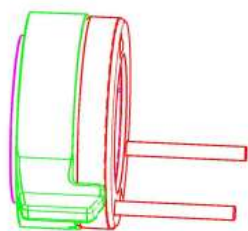


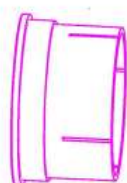


Instruction Manual

Zirbel Twister WE02/WE03/WE04/WE05



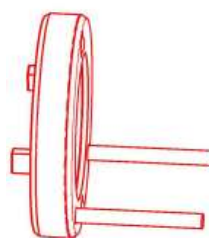
Twister WE02/WE03/WE04/WE05 has three parts:



Sleeve

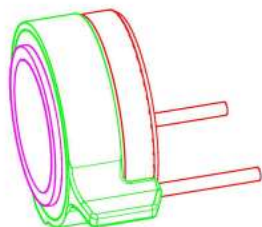


Twister Ring



Magnet Ring

Push all three parts together and check that the Sleeve is pushed up against the Magnet Ring.



Slide the Twister WE02/WE03/WE04/WE05 over the handlebar. Position the Twister and tighten the two 3M screws on the bottom side of the Twister (see picture below, yellow dots) with allen key 1.5mm. The two 3M screws press the Sleeve against the handlebar and fix the Twister WE02/WE03/WE04/WE05. Tighten the screws with max. 0.5 Nm.

