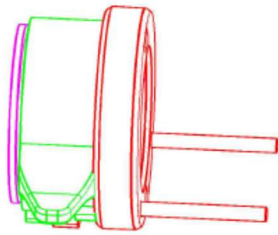




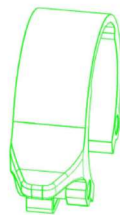
Zirbel Twister WE01 Instruction Manual



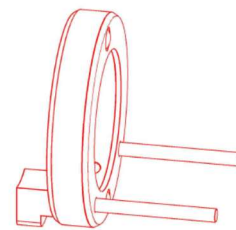
Twister WE01 has three parts:



Sleeve

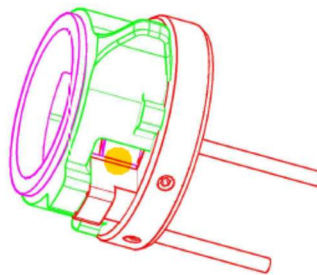
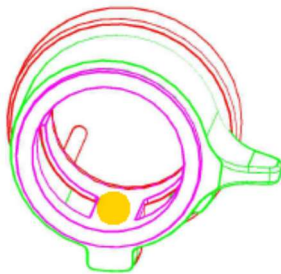


Twister Ring



Magnet Ring

Push all three parts together and check that the bridge of the Sleeve is located direct under the nose of the Magnet Ring (see picture below, yellow dots).



Slide the Twister WE01 over the handlebar, position the Twister and tighten the two 3M screws on the bottom side of the Twister (see picture below, yellow dots) with allen key 1.5mm. The two 3M screws press the Sleeve against the handlebar and fix the Twister WE01. Tighten the screws with max. 0.5 Nm.

