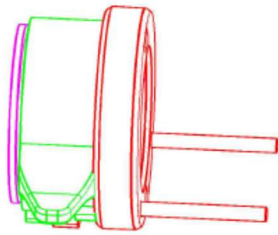


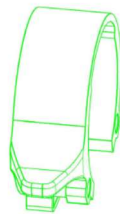
# Zirbel Twister WE01 Instruction Manual



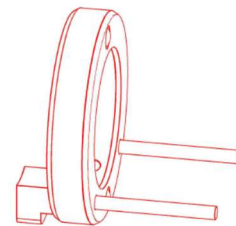
Twister WE01 has three parts:



Sleeve

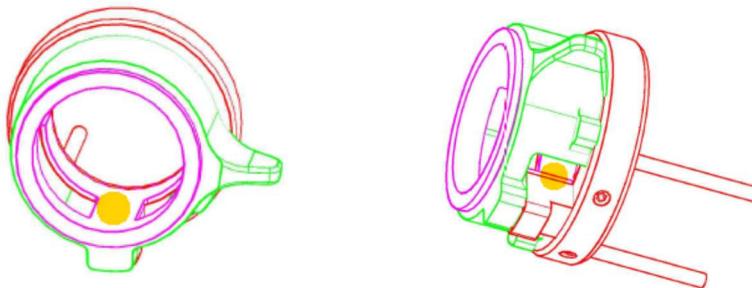


Twister Ring



Magnet Ring

Push all three parts together and check that the bridge of the Sleeve is located direct under the nose of the Magnet Ring (see picture below, yellow dots).



Unscrew the two 3M screws (see picture below, yellow dots) with an allen key 1.5mm slightly. Slide the Twister WE01 over the handlebar, position the Twister and screw in the two 3M screws until they touch the Sleeve. Then tighten the screws with half of a turn. Check if the Twister WE01 is well fixed. **IMPORTANT:** Do not over-tighten the screws.

