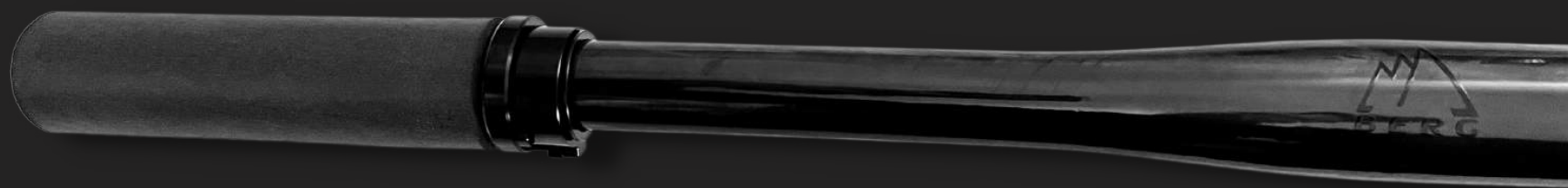


BERG



HOW TO INSTALL ZIRBEL WE01
(AXS) ON BERG HANDLEBAR

A STEP-BY-STEP GUIDE

DISCLAIMER

THE FOLLOWING GUIDE DESCRIBES THE WAY I INSTALLED THE AXS MODULE AND THE ZIRBEL W101 SHIFTER ON MY BERG HANDLEBAR. I USED THE METHOD WITHOUT THE BLIPBOX, WHERE THE SHIFTER CABLES ARE DIRECTLY SOLDERED ONTO THE PCB FROM THE AXS SHIFTER. THERE ARE MANY OTHER AND EVEN BETTER WAYS TO DO THIS, THAN I DID. HOWEVER, THIS WAY WORKED BEST FOR ME. IN ADDITION, I USED THE OEM BATTERY WITH A MODIFIED BATTERY HOLDER. OF COURSE, YOU CAN USE ANOTHER TYPE OF BATTERY. THEREFORE I WOULD RECOMMEND YOU TO READ THE INSTALLATION GUIDE ON THE OFFICIAL ZIRBEL WEBSITE.

KEEP IN MIND, THAT THIS GUIDE IS JUST AN ORIENTATION OR INSPIRATION. YOU CAN ALWAYS USE YOUR OWN CREATIVITY OR SOLUTIONS FOR THIS BUILD. THE ORIGINAL IDEA FOR THIS SOLUTION CAME FROM GUSTAV GULLHOLM (DANGERHOLM). FURTHERMORE, BERG AND I ARE NOT LIABLE FOR ANY DAMAGES OCCURING DURING YOUR MODIFICATION. ONLY DO THIS MODIFICATION AT YOUR OWN RISK.

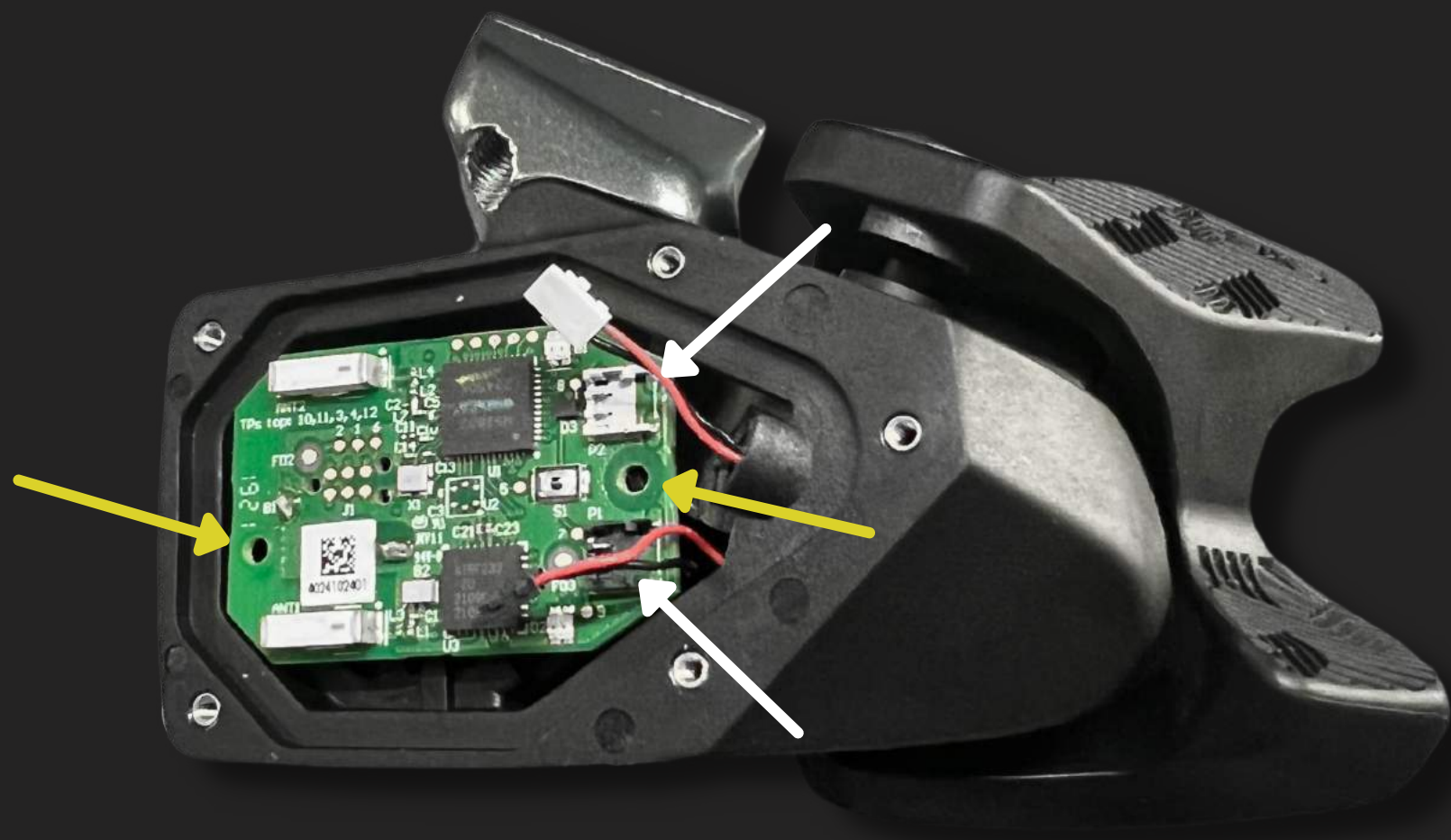
I HIGHLY RECOMMEND TO USE ENOUGH INSULATION MATERIAL FOR THE WIRES. IF YOU HAVE NOT SOLDERED ANYTHING BEFORE, DO NOT WORRY. I DID NOT EITHER. JUST WATCH A SOLDERING HOW-TO VIDEO. THAT IS THE WAY I DID IT.

AT THE END OF THIS GUIDE YOU WILL FIND A FAQ AND A LIST WITH USEFUL ITEMS FOR INSULATION.

HAVE FUN! - CannondalePat

HERE IS WHAT YOU NEED

- SOLDERING IRON
- SOLDER
- ENOUGH CABLES
- BATTERY
- BATTERY HOLDER
- STRIPPER PLIERS
- SCISSORS
- INSULATION MATERIAL (CHECK LIST AT THE END)
- SMALL SCREWDRIVERS (CROSS & TORX)
- NOISE INSULATION

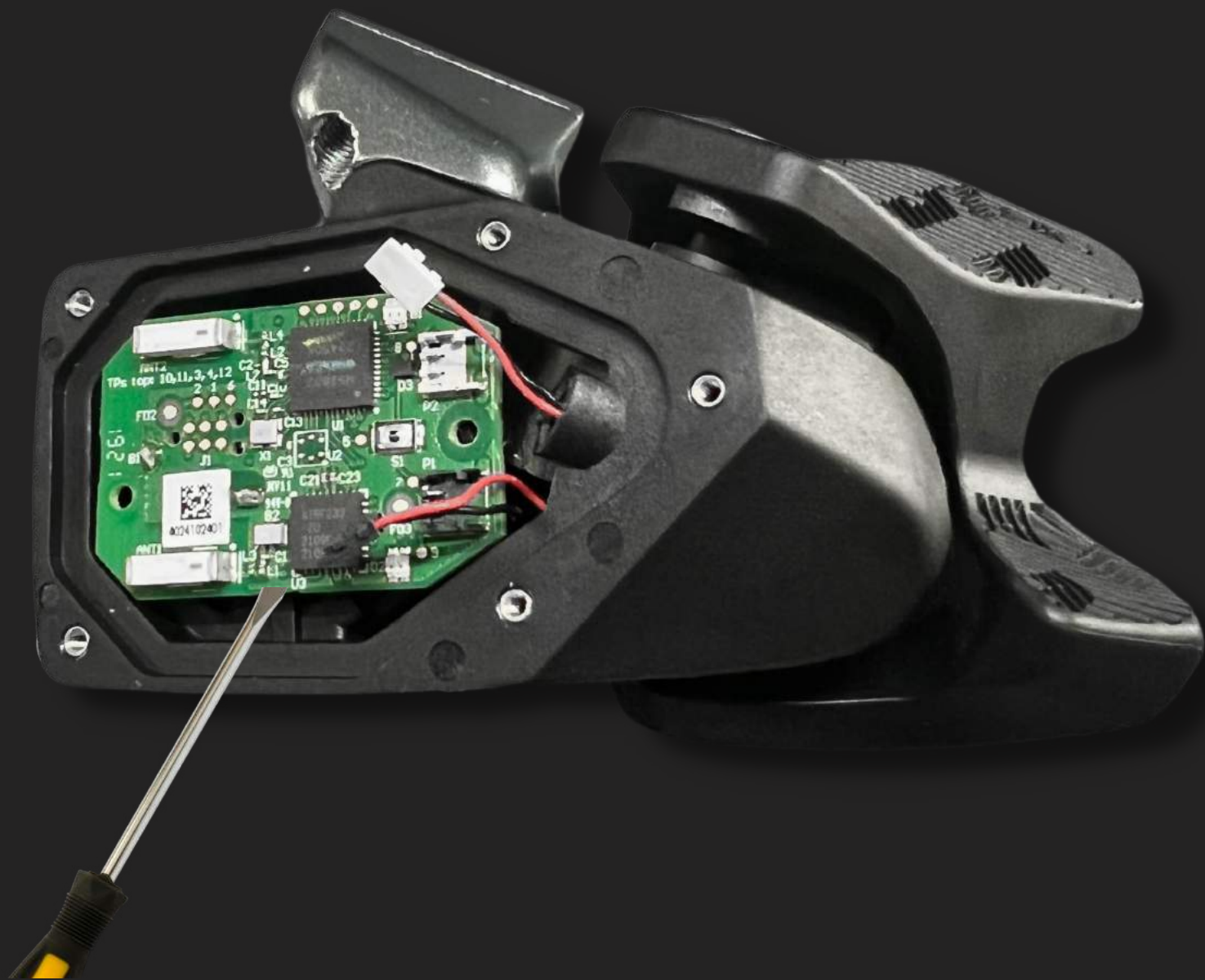


UNSCREW THE TWO BOLTS

UNPLUG THE TWO CABLES

FROM THE PCB

BERG



GENTLY PRY OUT THE PCB

BREAK THE 3 PLASTIC LINKS

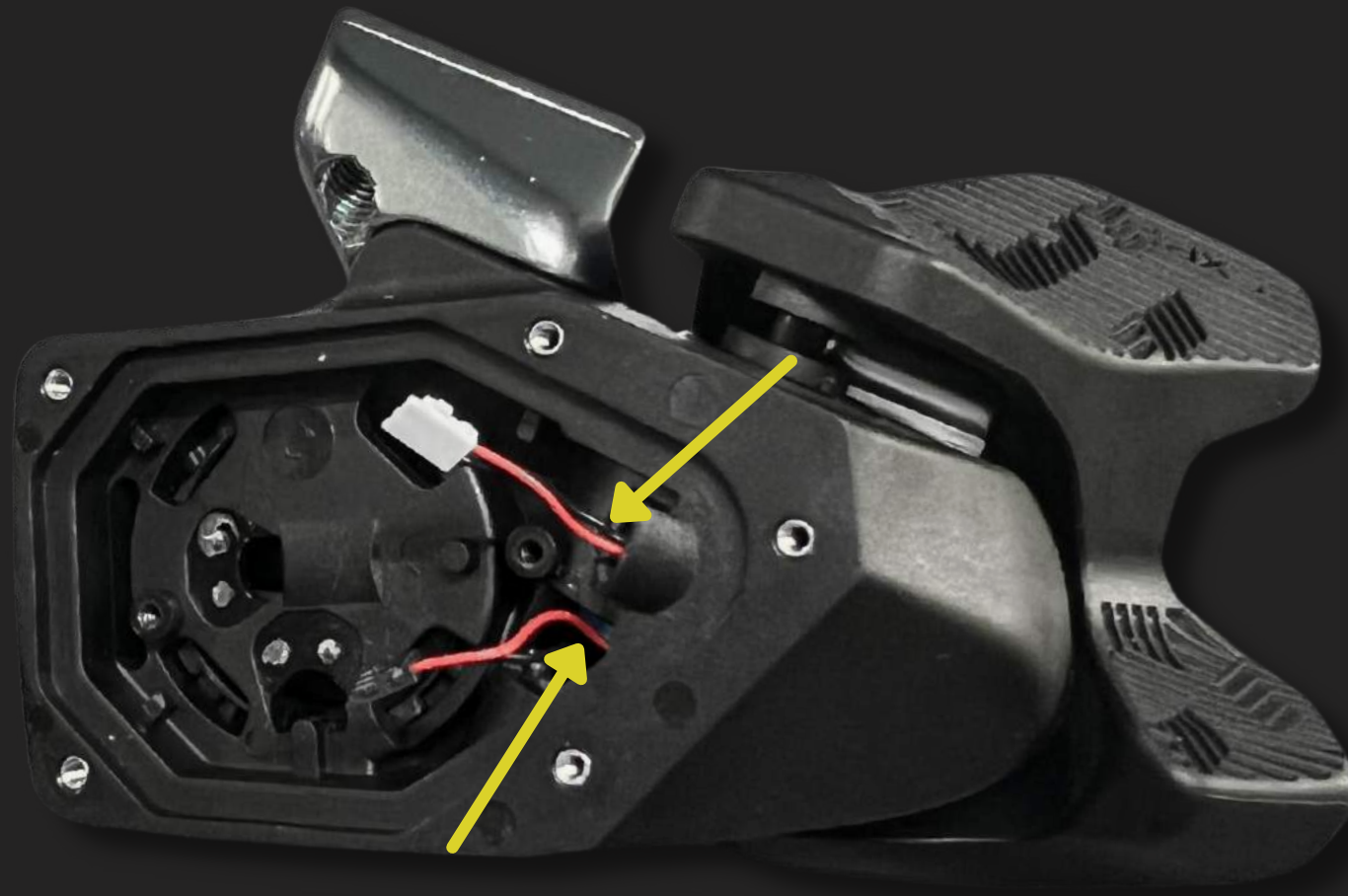
UNDER THE PCB

BERG



THE PCB IS FIXED TO THE BODY
WITH THESE 3 PLASTIC LINKS
THEY BREAK UNDER PRESSURE

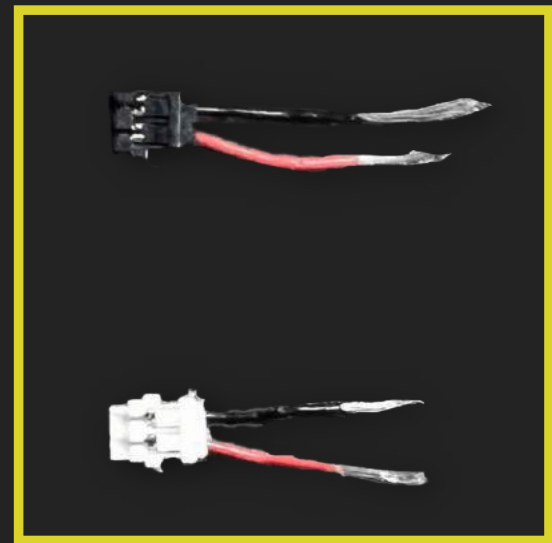
BERG



CUT OFF BOTH CABLES

ATTENTION: THE LONGER THE
CABLES THE BETTER

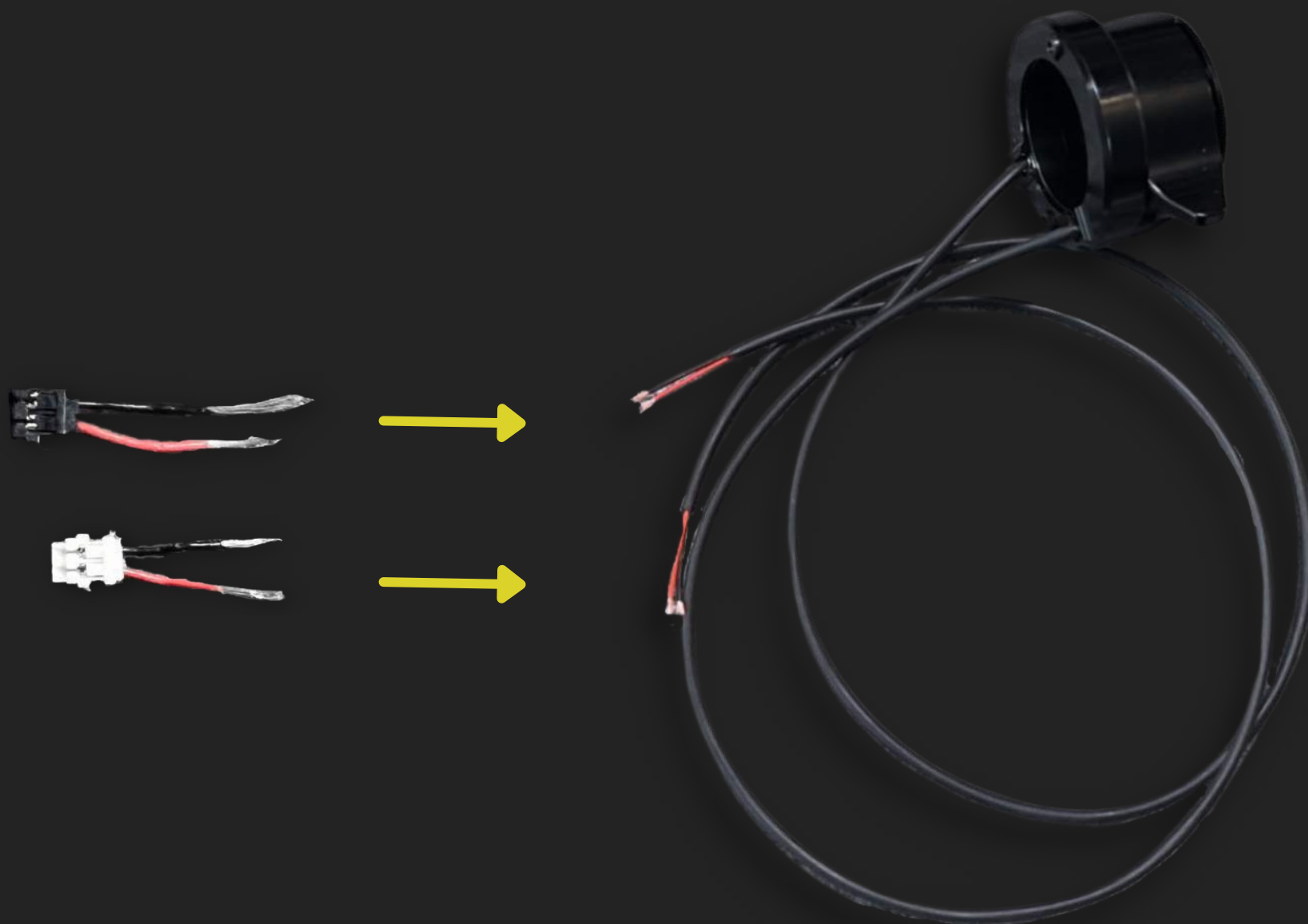
BERG



CUT OFF THE INSULATION

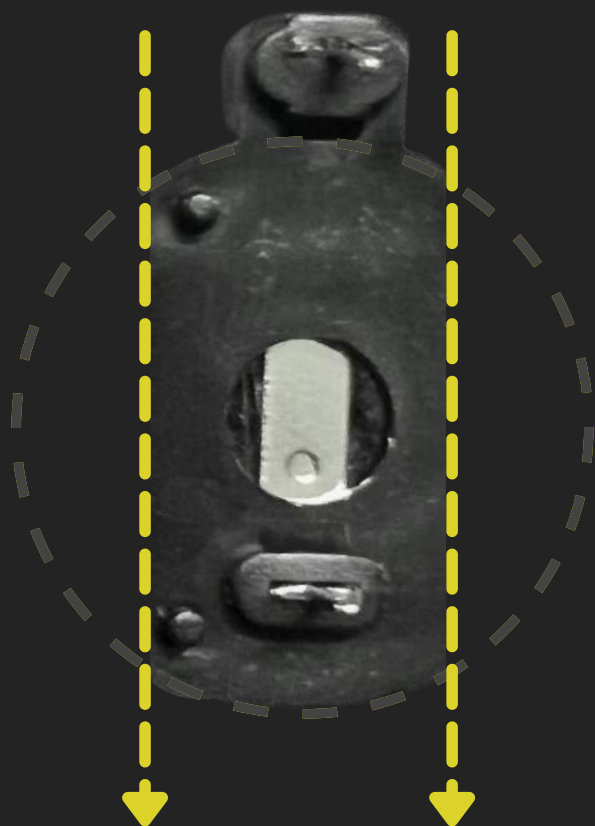
BE CAREFUL TO NOT CUT THE
WHOLE WIRE

BERG



SOLDER THE CONNECTOR
WIRES ON THE TWISTER WIRES
YOU CAN USE THERMOPLAST
FOR INSULATION

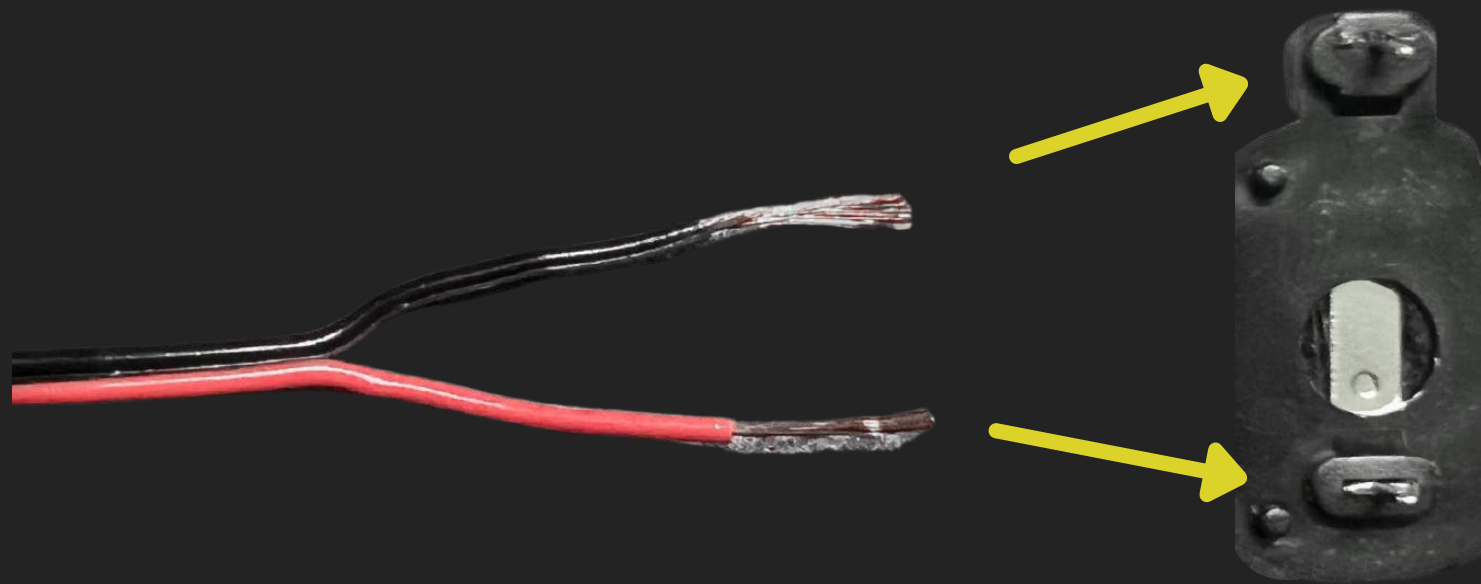
BERG



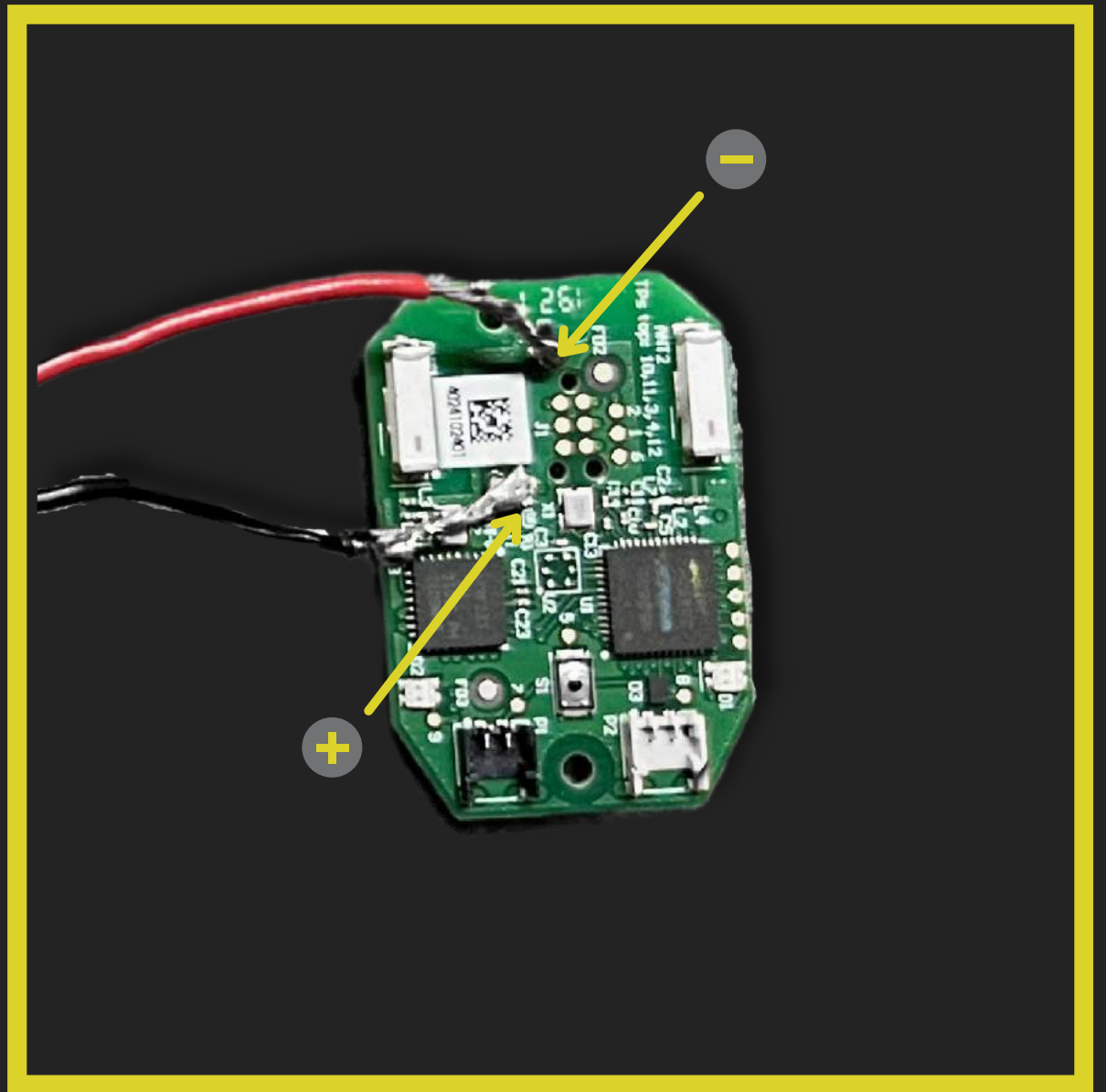
CUT THE SIDES OF THE BATTERY
HOLDER

IT SHOULD FIT INTO THE BAR

BERG



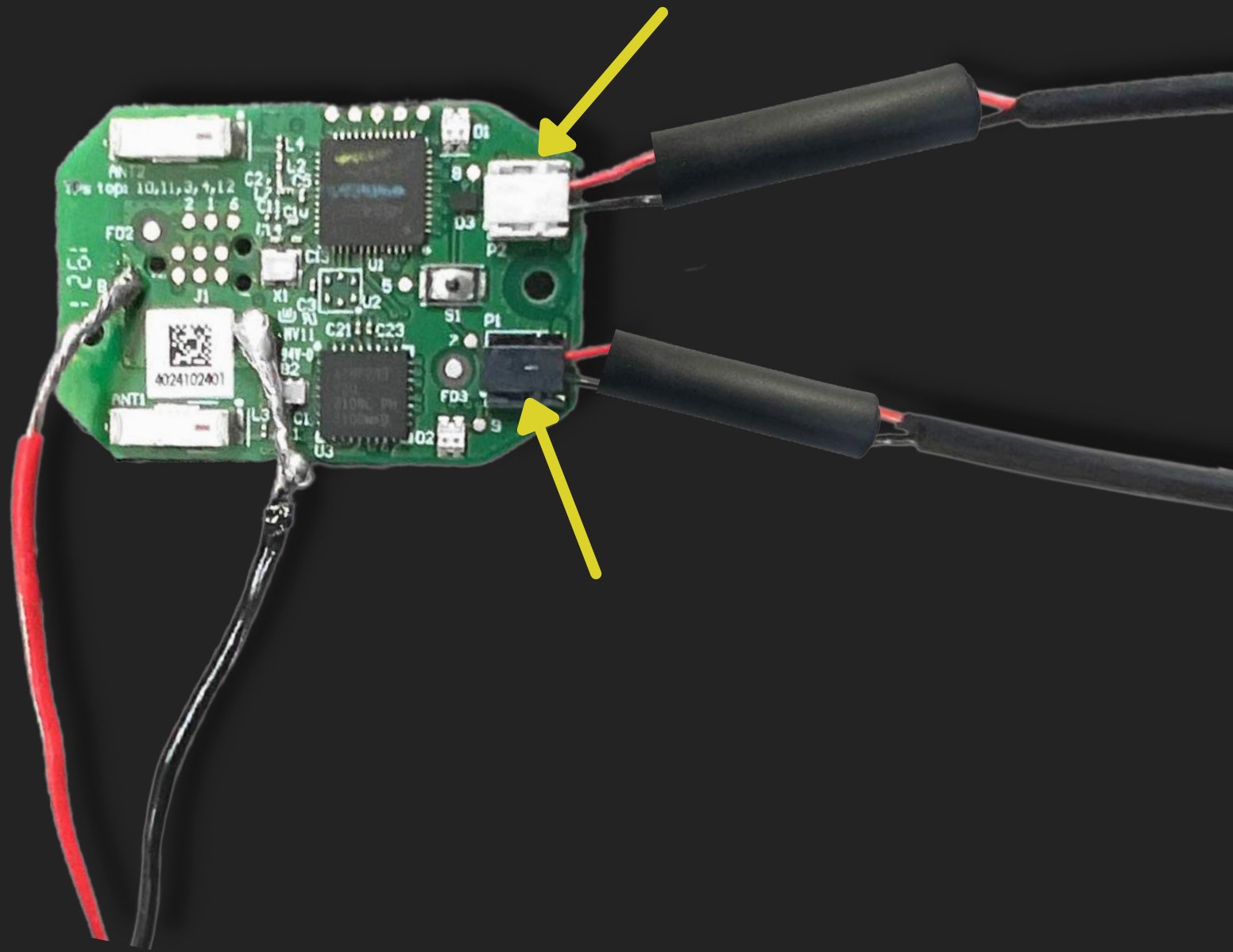
SOLDER THE POWER WIRES
ONTO THE CONTACTS OF THE
BATTERY HOLDER



SOLDER THE POWER WIRES ONTO
THE PCB POWER CONTACTS

MIND THE ANODE & CATHODE

BERG



PLUG THE CABLES INTO THE
CONNECTORS

CHECK IF THE SHIFTER WORKS

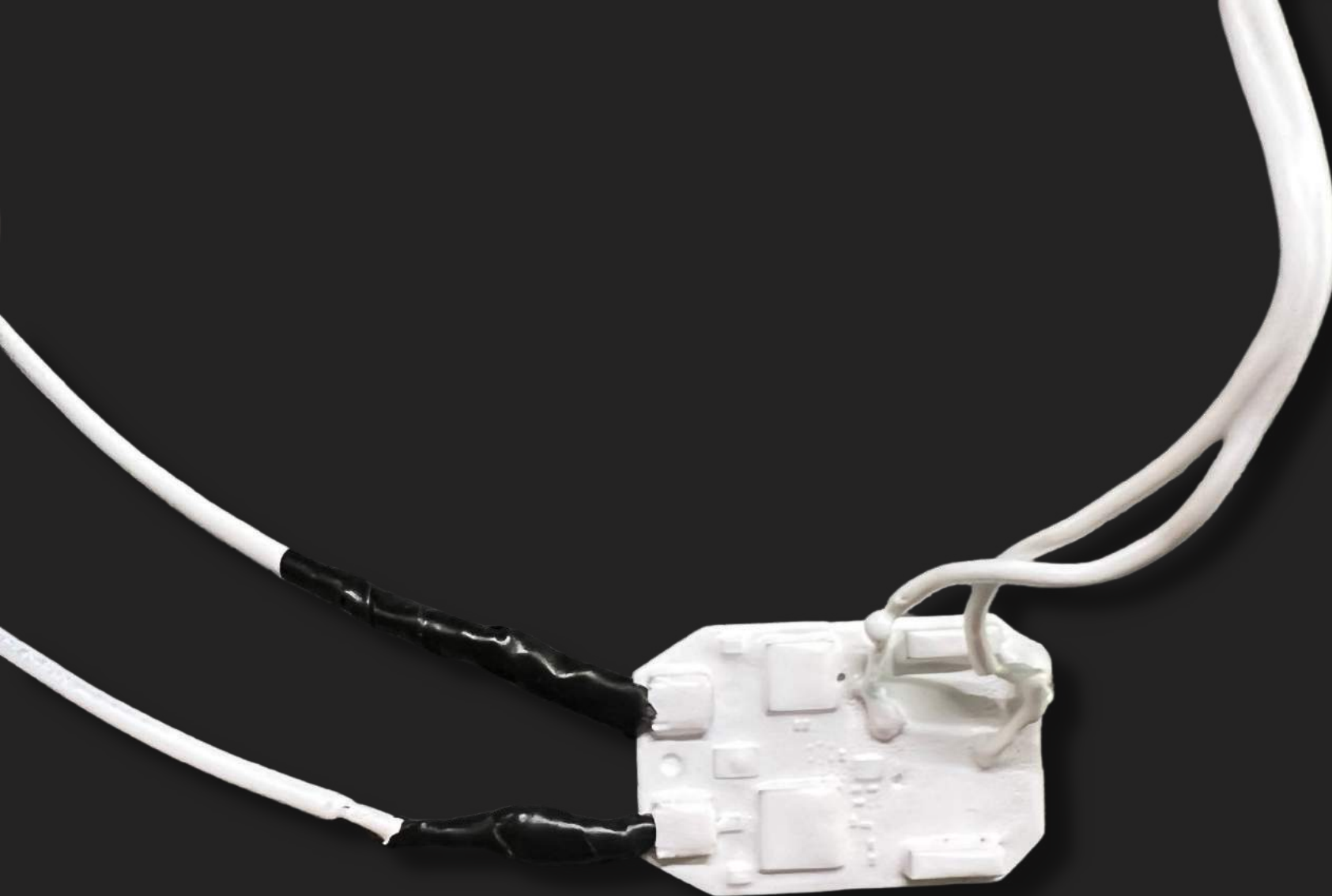
BERG



OPTIONAL

COAT THE PCB & CABLES WITH
LIQUID RUBBER (PLASTIDIP)

BERG



ADD ADDITIONAL INSULATION

E.G. INSULATION TAPE OR
THERMOPLAST

BERG



GENTLY PUSH THE PARTS INTO
THE BAR

IF THE PARTS HAVE PLAY,
ADD NOISE INSULATION

BERG



WHEN EVERYTHING SITS
PROPERLY, PULL IT OUT AGAIN

PUT THE SHIFTER ON THE
DESIRED POSITION

BERG



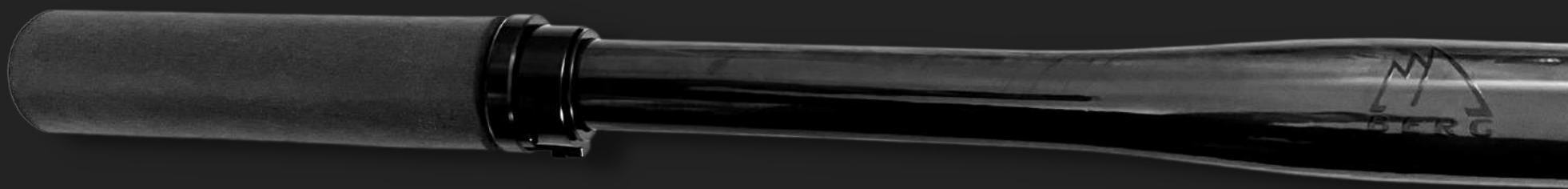
PUSH THE PARTS BACK IN
ROUTE THE CABLES TO THE
BAREND AND FIX THEM

BERG



CUT A NOTCH INTO YOUR
BAREND PLUG FOR THE CABLES
BE SURE TO AVOID THAT THE
CABLES ARE SQUEEZED

BERG



CONGRATULATIONS!

YOU HAVE SUCCESSFULLY
COMPLETED THE
INSTALLATION

BERG

FAQ

MY PCB DOES NOT FIT INTO THE BAR. WHAT CAN I DO?

YOU CAN SLIGHTLY SAND THE EDGE OF THE BOARD WITH FINE SANDPAPER

IS THIS BUILD WATERPROOF?

WITH MY BUILD, I CANNOT GURANTEE YOU 100% WATERPROOFNESS. HOWEVER, PLASTIDIP STATES THAT THEIR COATING IS IP67 WATERPROOF. YOU CAN ALSO ADD MORE INSULATION TO YOUR BUILD. SOME PEOPLE PUT THER PARTS INTO BALLONS OR ADD SILICONE BUSHINGS TO THEIR BAREND PLUGS. CHECK THE FOLLOWING LIST FOR MORE INSULATION POSSIBILITIES.

HOW CAN I REDUCE THE NOISE IN THE HANDLEBAR?

I RECOMMEND TO USE SOME SORT OF TEXTILE TAPE, THIN FOAM OR WADDING.

HOW LONG WILL THE OEM BATTERY LAST?

SRAM STATES A LIFESPAN OF 2 YEARS, DEPENDING ON USAGE.

CAN I STILL USE THE AXS BUTTON AFTER THIS MOD?

YES, EVEN WITH MY RUBBER COATING THE AXS BUTTON IS WORKING TO 100%.

MY PARTS ARE STUCK IN MY HANDLEBAR. HOW CAN I GET THEM OUT OF?

BE SURE TO NOT PULL THE CABLES TO HARD, THEY MIGHT BREAK OR DAMAGE THE CONNECTORS. USE LONG-NOSE PLIERS TO GENTLY PULL THE PCB OUT. BE SURE NOT TO DAMAGE ANYTHING ON THE PCB WHILE GRABBING IT. I DO NOT RECOMMEND THE USAGE OF TWEEZERS.

INSULATION & TIPS

- INSULATION TAPE
- THERMOPLAST
- LIQUID RUBBER COATING (PLASTIDIP)
- SILICONE CONFORMAL COATING (THX TO ALEIX)
- CORROSIONX (THX TO ALEIX)
- BALLOON
- SILICONE BUSHINGS FOR THE BARE ENDS

FOR A MORE CONVENIENT INSERTION AND EXTRACTION OF YOUR INTERNALS, YOU CAN FIX THE PCB AND THE BATTERY ON A SMALL BOARD OR PIECE OF METAL. SO YOU HAVE ONE SOLID PIECE YOU CAN PULL OUT OF YOUR HANDLEBAR WITHOUT DAMAGING CABLES ETC.